



Outdoor toilet "HB" series 1.3×1.5

Project Dimensions

1.3 × 1.5 / 1.1 m²

Full house set

666 €

Timber



45 MM



65 MM
+ 159 €

Project planning



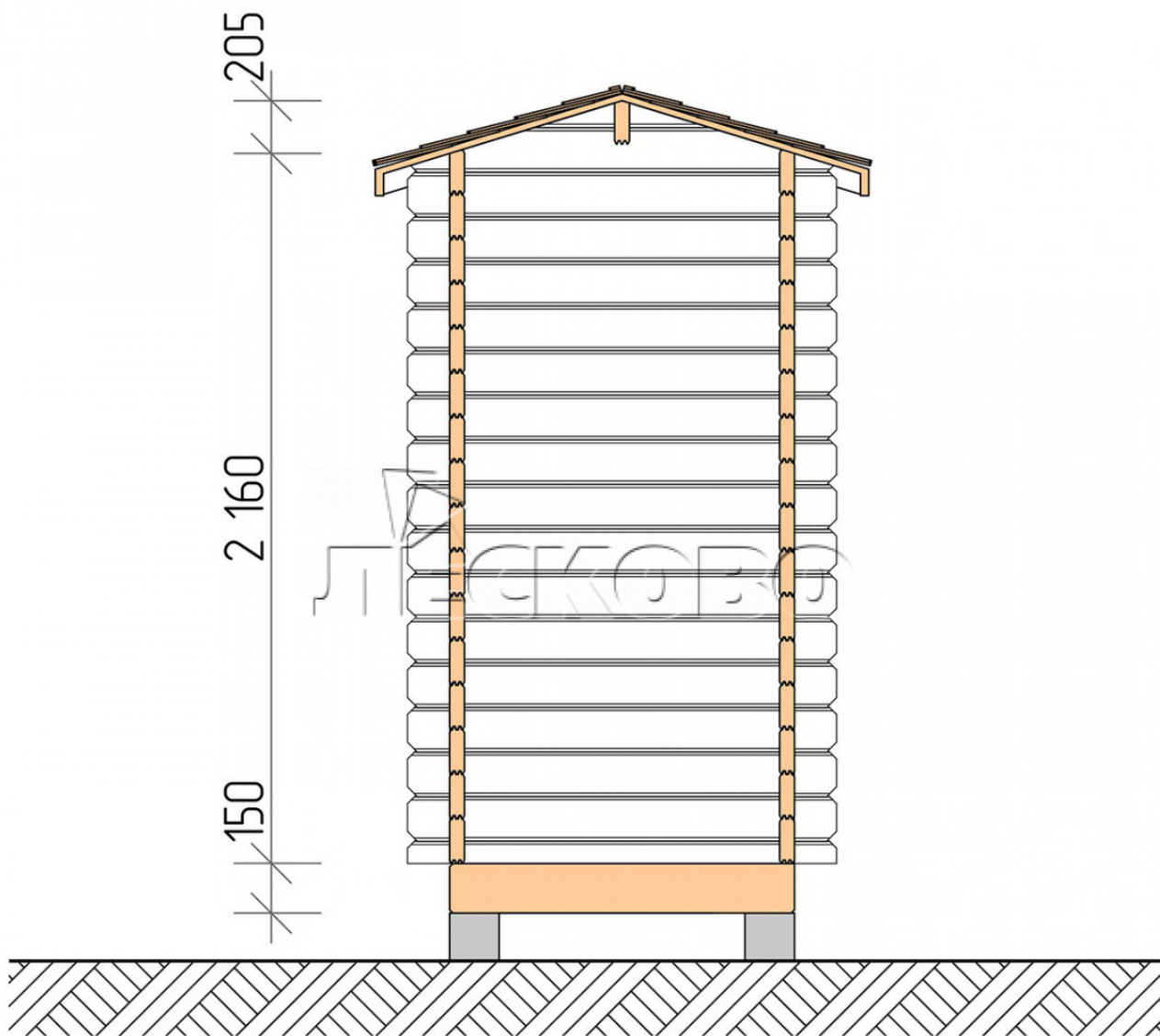


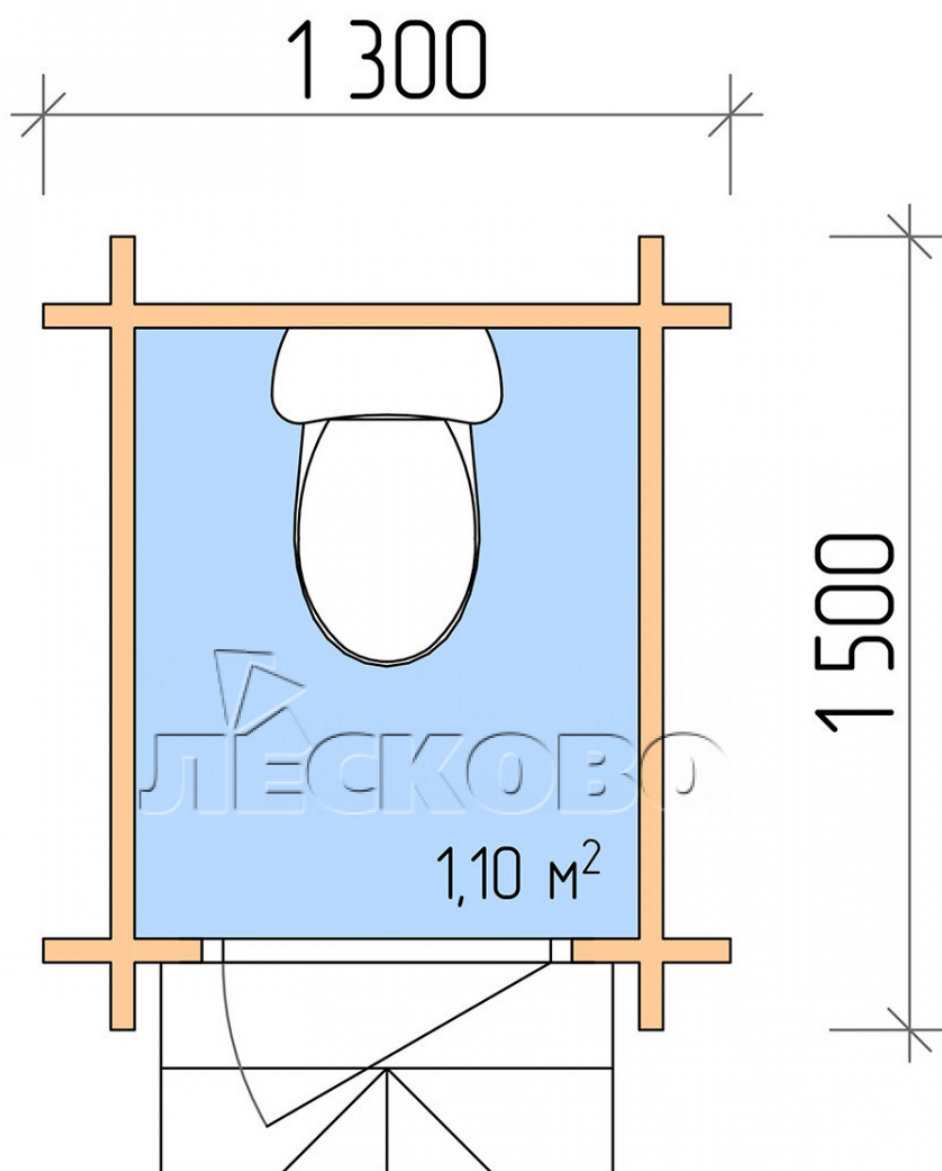
1 300

1 500

I. 10
M²

Разрез





House Kit

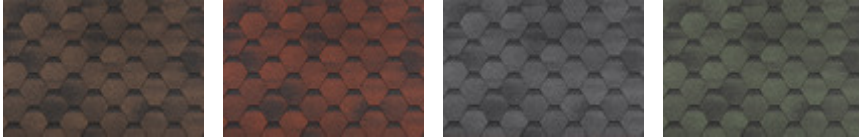
- Wall kit: mini-chamber drying chamber 44 × 145 mm with bowls for the project;
- Logs, lower harness: board 45 × 145 mm chamber drying 10-12%;
- Floors: floorboard 35 mm, chamber drying;
- Ceiling: imitation of a bar 20 × 135 mm, chamber drying;
- Wooden windows, glass 4 mm, Single. Treatment with a colorless antiseptic. Hardware;
 {{ attribute_windows }}
- Wooden doors;



1 шт.

7. Platbands: dry planed board 20 × 100 mm;

8. Roof: shingles;



9. Skirting board 35 mm.

+7 (927) 738-08-11

г. Самара, ул. Дачная, д. 28, оф. 7