



Log Cabin "DS" series 3.5×3

Project Dimensions

4.8 × 8.8 / 45 m²

Full house set

6,960 €

Timber



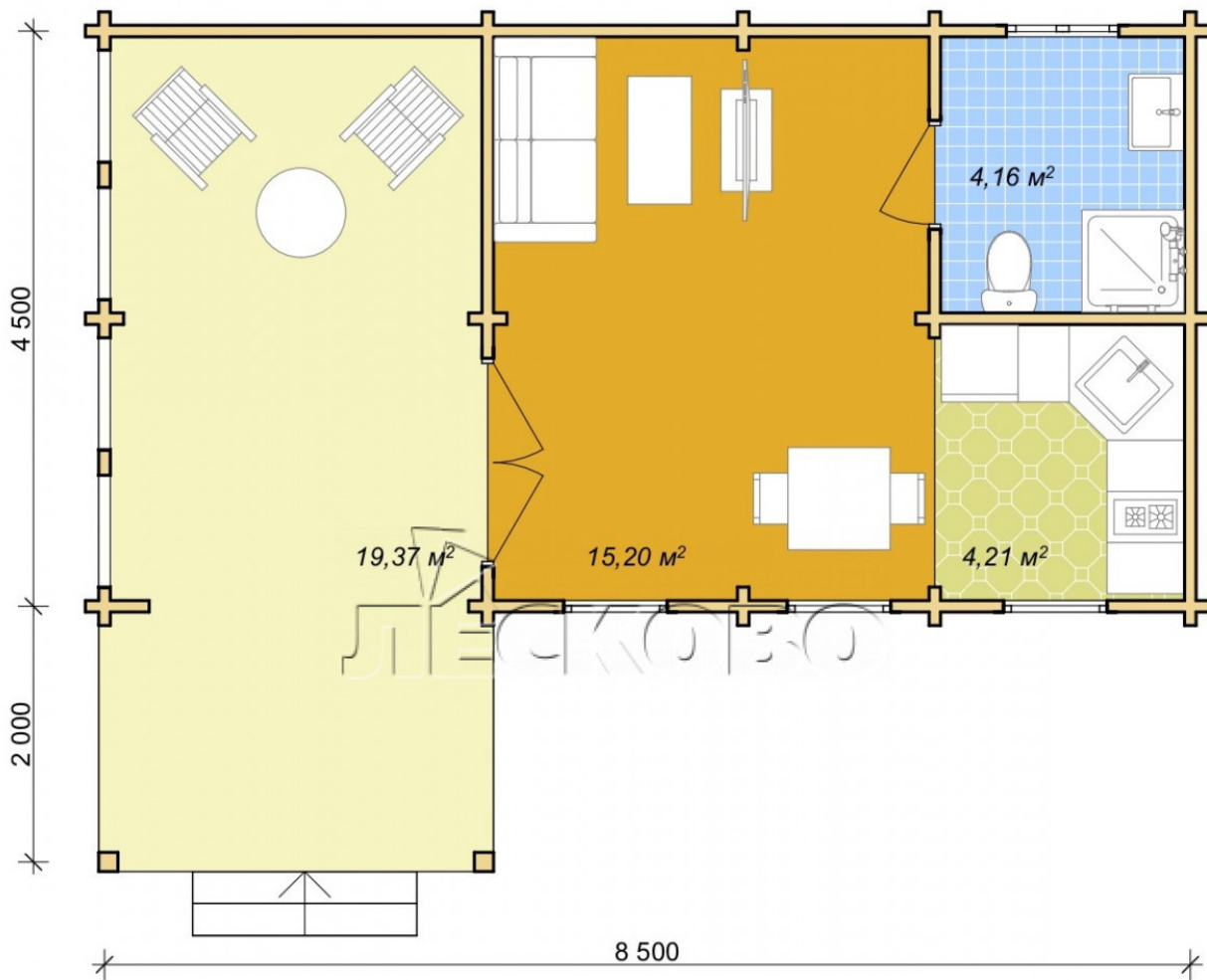
45 MM

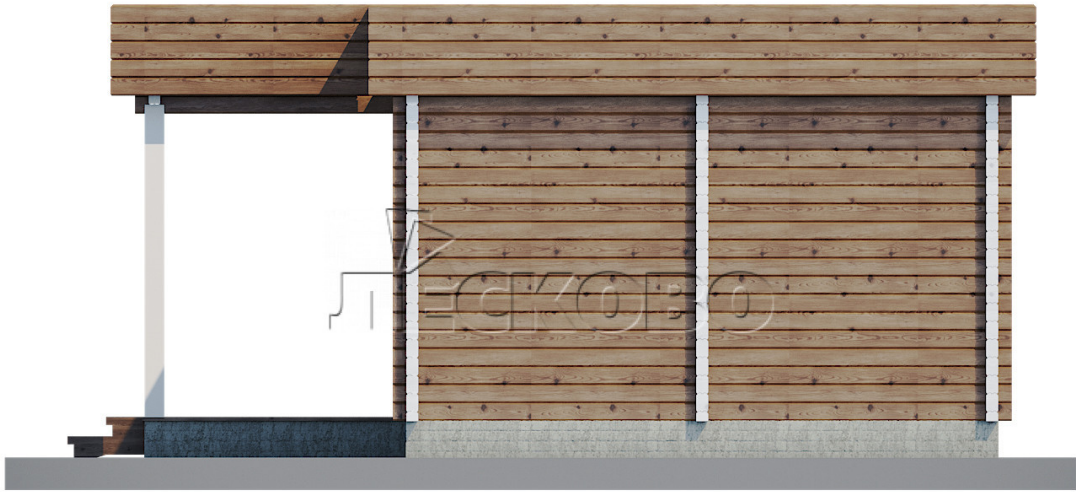


65 MM
+ 1,765 €

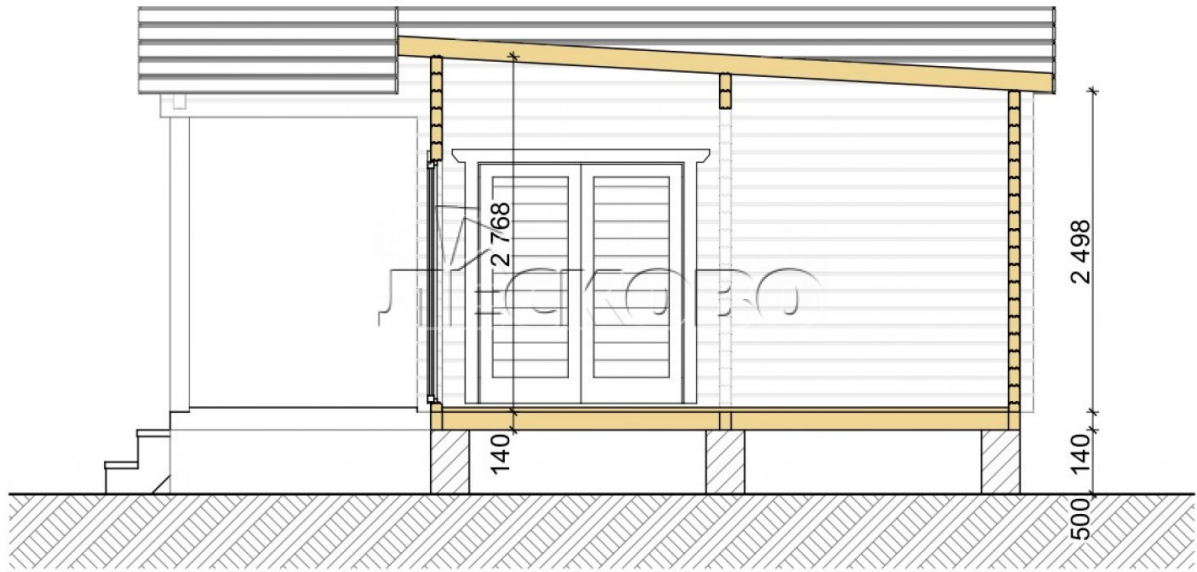
Project planning











House Kit

- Wall kit: 44 × 145mm mini-chamber drying chamber with bowls for the project. The material of the tree is spruce, pine (GOST 8486). Humidity 12-14%. The height of the walls is 2.16 m;
- Logs, lower harness: board 45 × 145 mm chamber drying 10-12%;
- Floors: floorboard 35 mm, Chamber drying;
- Ceiling: imitation of a bar 20 × 135 mm, Chamber drying;
- Wooden windows, glass 4 mm, Single. Treatment with a colorless antiseptic. Hardware;



Window 0.84×1.885
м.3 шт.



Window 1.62×1.885
м.1 шт.



0.87×0.78 м.1 шт.

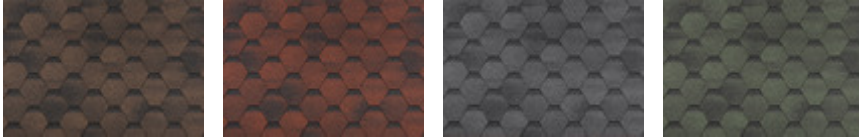
- Wooden doors;



1 шт.

7. Platbands: dry planed board 20 × 100 mm;

8. Roof: shingles.



9. Skirting board 35 mm.

+7 (927) 738-08-11

г. Самара, ул. Дачная, д. 28, оф. 7